



BOTTLE CRUSHER



Model: GLSand

INSTRUCTION MANUAL

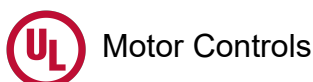


IMPORTANT!

**PRIOR TO OPERATION ALL USERS MUST READ THE
ENTIRE INSTRUCTION MANUAL**

Expleco Ltd has an ongoing development programme and the product
pictured may differ slightly in appearance.

Specifications are subject to change without notice.





WARNING

BEFORE USING THIS PRODUCT PLEASE READ THE FOLLOWING SAFETY PRECAUTIONS, TO AVOID PERSONAL INJURY. IT IS IMPORTANT TO UNDERSTAND THE APPLICATIONS, LIMITATIONS AND POTENTIAL HAZARDS ASSOCIATED WITH THIS PRODUCT.

1. This machine is designed to crush glass bottles ONLY
2. Do not use the Oppressor GLS for any other use.
3. The machine is not intended for use by young or infirm persons.
4. Children or visitors should be kept well away from the machine and should not be permitted to handle the machine or power cord.
5. The machine is designed for interior use. Do not use the machine in wet conditions.
6. Do not use the machine near flammable liquids or gases.
7. The power supply cable should be checked and certified at 6 monthly intervals by a registered electrician.
8. The power supply must be capable of delivering 220-240v @ 10 amps. Extension cords must not be used unless they are heavy duty cords. Low amperage or excessive extension cord length will cause the overload reset button on the machines switch housing to trip out. After rectifying the power supply or extension cord the overload will need to be pressed in to reset, prior to starting the machine.
9. Protective eyewear and ear protection is recommended to be worn.
10. If handling broken bottles protective gloves must be worn.
11. Before starting the machine check the bucket level.
12. Never place bottles in the machine unless the machine is running and the red LED light is on.
13. Bottles must be inserted into the machine neck down.
14. Caps and all liquid must be removed from bottles prior to inserting into machine.
15. Do not use the machine if dust is emitting from the filter or inlet. This is an indication that the filter needs cleaning or bucket needs emptying.
16. In the rare occurrence of a bottle jamming protective gloves must be worn prior to opening the chute and removing the jammed glass.

17. Never service the machine, change components, or open the chute unless the power supply HAS BEEN REMOVED FROM THE WALL SOCKET.



Fig 1



Fig 2

OPERATING INSTRUCTIONS

1. Ensure that machine is plugged into a 220-240v 10 amp supply using the longer lead. Always **ensure** that short cord from motor is **saddled** to chute and plugged into electric socket on side of main housing. (**fig 2.** as factory fitted)
2. Check level in bucket. (must be 20 Litre Expleco Bucket)
3. Turn machine on, ensuring that LED light is on. (LED light shows that machine is running where background noise/music in bar makes it difficult to hear that machine is running.)
4. Ensure that all bottle caps are removed. Feed bottles into machine neck first. Bottles can be fed immediately one after the other.
5. Once bucket is full turn machine off. Pull jack handle towards you to lift housing/lid 50mm above bucket. Remove bucket to empty. Replace bucket by locating bucket firmly against green foam bucket locator pad. Push jack handle back, ensuring that lid flange does not catch on top of bucket. **Bucket must seal against foam seal on lid.** Jack handle must be pushed back until nearly vertical and then released. This will ensure that the bucket is properly sealed. To ensure seal only use the Expleco Bucket !!

Bottle Jam

1. On the rare occasion that a bottle jams in the feed in chute or stalls the motor, carry out the following procedure.
2. If motor is still running use T jack handle clear bottle jam. The T of handle will not allow contact with machine flails.
3. If motor stalled turn machine off and pull power supply plug from wall socket.
4. Using 8mm Allen wrench supplied, undo the chute retaining bolt and open chute. As an absolute safety measure (fig2) you will need to unplug the short cord to open the chute. Using protective gloves remove the jammed

- bottle or clogged glass from the chute and/or main housing. Check that the main rotor and flail assembly turns freely.
5. Always ensure that the retaining circlip on the 8mm chute retaining bolt is in place to ensure that the 8mm retaining bolt does not get misplaced or misused.
 6. Clean glass grit from the rubber chute/housing gasket. Relocate the chute and tighten the chute retaining bolt firmly – being sure that a proper seal is attained. Do not overtighten.
 7. If overload protector tripped during the jam you will need to reset the overload on the switch housing by pushing it in.
 8. Restart the machine.

Chute Inlet Protective Flaps (fig 3.) Inspection/Replacement

1. The inlet protector flaps protect the operator from ejected glass particles. The flaps should be replaced immediately if they become damaged and allow any glass particles to be ejected.
2. Wearing of holes in top shroud (fig 3) could allow glass particles to be ejected. This could occur after production of 50-60,000 bottles. It must be immediately replaced if holes appear in shroud.
3. Note in tropical environments the protective flaps may lose their flex resistance. In this case foam flap support kits can be ordered from the factory if not already fitted to machines.

Filter Clean/Replacement

1. If visible dust is seen coming from the filter or main inlet, it is an indication that the filter needs cleaning or the bucket is overfull. The primary filter is the white filter disc which is fitted in the main filter neck. (fig 3)
2. Primary filter clean can be achieved by tapping on top of filter with knuckles so that the accumulated dust is dislodged from the primary filter and falls down into bucket.
3. If visible dust is still coming from the main inlet or filter the primary filter will need replacing. Please contact Expleco or the machine supplier for supply of replacement primary filter.

Bearing grease.

1. The machine is pre-greased in the factory.
2. If the machine makes an intermittent or consistent squeak the main bearing will need greasing.
3. With the machine running pump grease into the grease nipple on the top of the main bearing. Wait between each pump and when squeak stops give one more pump. Do not over grease.
4. As a rough rule of thumb you may find that you need to grease once every 4-5000 bottles.

Consumable Items

1. The Oppressor GL has specialised internal components which are made from high tech abrasion resistant materials which eventually need replacing. These parts are readily available for purchase from Expleco or your machine supplier. The parts must be installed by a factory approved service technician.
2. The consumable items and indicative life are as follows.
 - 12 x Oppressor Oscillating Flails - 50,000 bottles
 - Main Screen - 20,000 bottles
 - Top screen shroud - 40,000 bottles
 - Main Bearing -50,000 bottles
 - Buckets – available as required. Only use the Expleco Bucket

These are average component lives. You may get a longer life from some components. If in doubt contact your supplier or Expleco.

Safe Movement of machines

The machines are fitted with handling wheels to enable the machines to be moved safely over level and even ground. If ground is unlevel then it is advisable to strap machine to suitably rated hand trolley for safe secure movement.

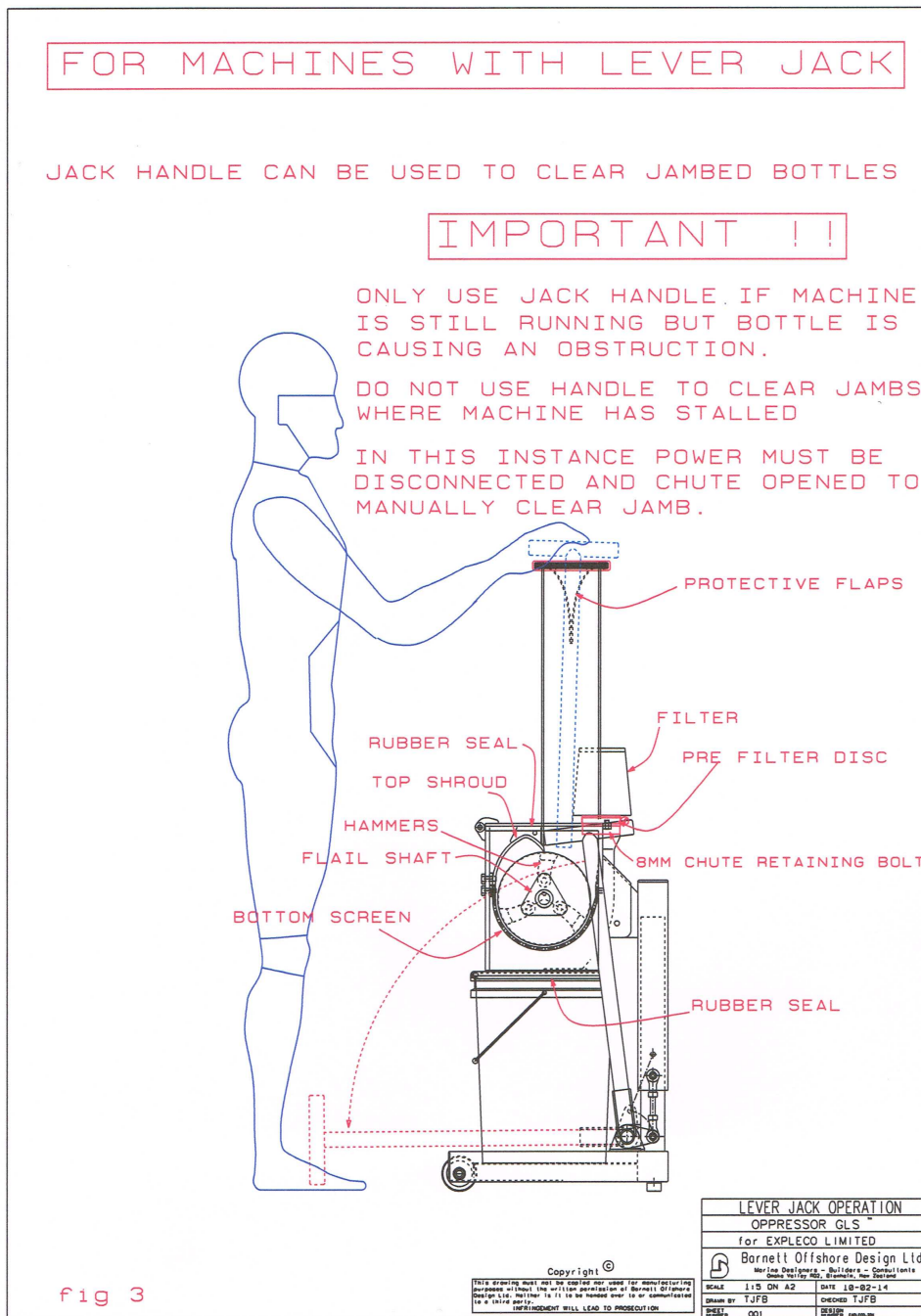
Residual risks and Disposal

All parts of the machines are able to be recycled. There are no residual toxic or hazardous substances or materials used in the manufacture of the machines. At the end of the machines useful life it is important that the machine and its parts are disposed of in an environmentally safe manner and in accordance with the local laws in place at the time of disposal.

Trouble Shooting

Trouble	Probable cause	Remedy
Squeak or Whistling Noise	1. Dry Bearing 2. Main Shaft Misalignment	1. Grease Bearing 2. Contact supplier and have shaft re-aligned.
Unusual Vibration or knocking sound	1. Main Shaft Misalignment 2. Damaged Oppressor Flail	1. Contact supplier and have shaft re-aligned. 2. Replace damaged Oppressor Set.
Overload Switch Trips regularly	1. Bearing Failure 2. Power Supply Inadequate 3. Extension cord too long. 4. Main Shaft Misalignment as referred above.	1. replace main Bearing 2. Ensure 240v 10amp supply. 3. Use shorter or Heavy Duty Extension.

Dust Leaks from Bucket Lid	<ol style="list-style-type: none"> 1. Jack not lowered correctly 2. Bucket seal leaking 3. Incorrect diameter bucket 	<ol style="list-style-type: none"> 1. Ensure Lid is central on bucket and jack lever is release in vertical position. 2. replace bucket seal. 3. replace with Expleco bucket.
Dust is visible from inlet and/or filter	<ol style="list-style-type: none"> 1. Full Bucket 2. Primary Filter clogged 3. Main Filter clogged 	<ol style="list-style-type: none"> 1. empty bucket 2. Clean Primary Filter. 3. Clean or replace main filter.





EC Declaration of Conformity

We Expleco Limited
Of 179 Brookby Road,
 RD2 Blenheim
 Marlborough, 7272
 NEW ZEALAND

declare that the product.

Product Name; **OPPRESSOR Bottle Crushing Machine**
Series. **GLS, GLC, PET**

Is in conformance with the provisions of the following EC Council Directives.

Machinery Directive 2006/42/EC

Under Conformity Assessment Method in accordance with Annex VIII

And has components fitted that conform with the following EC Council Directives.

Low Voltage Directive 73/23/EEC (amended by 93/68/EEC)

In conformity with IEC 60034-1:1997 + A1:1997 + A2:1999

EMC Directive 89/336/EEC (amended by 92/31/EEC, 93/68/EEC and 98/13/EC)

In conformity with AS/NZS CISPR14.1 and IEC 204-1

Noise Emission Declaration under section 1.7.4.2(u) of 2006/42/EC

A – Weighted Sound Pressure Level at workstation 1m from machine

Machine Running no load **68dB(A)**

Machine Crushing Bottles **82 dB(A) – 85 dB(A)** (dependent on bottle size and density)

A - Weighted Sound Power Level emitted by the machinery

Machine Crushing Bottles **90 dB(A) – 93 dB(A)** (dependent on bottle size and density)

NOTE! Noise from crushing function is intermittent with duration of 2-5 seconds per bottle.

Signed by _____

Tim Barnett
Managing Director
Expleco Ltd



DATE February 5, 2014

GUARANTEE

Expleco Limited guarantees this product from defects of materials and workmanship for a period of twelve months from date of purchase provided that the product is used in accordance with the recommendations set out in this instruction manual and with voltage and current limits set out on the motor plate. Expleco Limited will at its own option make good, replace the complete machine (or defective component) with the same or similar product, or provide credit for any product manufactured or supplied by it, which proves to be defective within the limits set out above provided that always no repairs, modifications or alterations to the product have been undertaken or attempted, other than by the company or its authorised agents. Should the purchaser wish to make a claim under the guarantee, the product should be returned pre-paid to the place of purchase.

To obtain the warranty the purchase receipt must be returned with the machine. This guarantee is in addition to and does not take away from any rights available to the consumer under the Consumer Guarantees Act.

A TWELVE MONTH GUARANTEE APPLIES TO THIS PRODUCT FOR DOMESTIC AND LIGHT INDUSTRIAL USE ONLY. (Bars, restaurants, cafes, hotels, motels, lodges, charter vessels and other intermittent light industrial sites)

THE GUARANTEE IS APPLICABLE FROM THE ORIGINAL DATE OF PURCHASE

TO OBTAIN THE WARRANTY THE PURCHASE RECEIPT MUST BE RETURNED WITH THE MACHINE.

THE GUARANTEE EXCLUDES:

- **DAMAGE, MALFUNCTION OR FAILURE DUE TO NEGLIGENCE, MISUSE OR ABUSE**
- **DAMAGE MALFUNCTION OR FAILURE DUE TO USE IN CONTINUOUS AND/OR HEAVY INDUSTRIAL APPLICATIONS.**
- **DAMAGE, MALFUNCTION OR FAILURE DUE TO USE IN APPLICATIONS THAT THE MACHINE IS NOT DESIGNED TO PERFORM.**
- **CONSUMABLE COMPONENTS AND ACCESSORIES.**
- **REPAIRS, MODIFICATIONS, OR ALTERATIONS ATTEMPTED OR MADE TO THE MACHINE BY OTHER THAN AN AUTHORISED AGENT.**



Sales and Service Enquiries

www.expleco.com tel. +64 3 5729105 fax + 64 3 5729560.

© This Instruction Manual is subject to copyright and must not be reproduced, copied or otherwise used in any way or for any purpose without the consent in writing of Expleco Limited